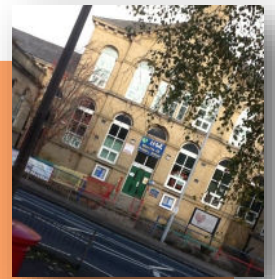


Wycliffe Weekly

ALL DIFFERENT ALL EQUAL



"LIFE IN ALL ITS FULLNESS"
(JOHN 10:10)

15th September 2023

Coffee Morning

On: 29th Sept 2023

At: Wycliffe 9am

We are holding a coffee morning and would love any baked goods donations for us to sell on the day. Please drop them off at the school office on Thursday 28th after school or Friday morning. Thank you!

**MACMILLAN
CANCER SUPPORT**

COME AND
JOIN US!

THIS WEEK'S
HOUSEPOINT
WINNERS:

NORTHCLIFFE
WOOD

ATTENDANCE:

95.9%

Our target is:
97.0%

LAST WEEK'S ATTENDANCE

R	OAK	100%
R	MAPLE	100%
1	CEDAR	100%
1	HAZEL	98.1%
2	CHESTNUT	99.6%
2	ELM	93.5%
3	CHERRY	95.7%
3	WILLOW	97.1%
4	ASH	96.6%
5	BEECH	89.1%
5	LAUREL	91.8%
6	ROWAN	91.3%
6	YEW	93.8%

Diary Dates

19.09.2023: 15:30 Learn by Hearts (Maths) workshop in school for parents.

21.09.2023—22.09.2023: Y5 residential to High Adventure.

28.09.2023: 15:30 CAPOW meeting in school. All parents welcome to attend.

29.09.2023: 09:00 —10:00 Macmillan Coffee Morning. Please enter via the main office.

17.10.2023: 09:30 KS2 Harvest service at St.Paul's Church. Parents welcome to attend.

17.10.2023: 13:45 KS1 Harvest service at St.Paul's Church. Parents welcome to attend.

17.10.2023: 15:15 Harvest Festival Feast. Letter going out today.

18.10.2023: Flu vaccinations for all pupils. You should have received a consent email.

18.10.2023 & 19.10.2023 : 15:30 —16:30 Book Fair. Please enter via the main office.

18.10.2023: Parents' Evening. We will text you a booking link.

20.10.2023—27.10.2023 : October half

PE DAYS

Mon	Y1, 2 & Willow.
Tue	Willow, Y5 & 6.
Wed	Y1 & 2.
Thu	Y5 & Rowan.
Fri	Reception, Cherry and Y4.



SCOOTER DAYS

Mon	EYFS & Y2
Tues	YEAR 4 & 5
Wed	YEAR 1
Thurs	YEAR 6
Fri	YEAR 3



DATE
CHANGE

Apologies



Headteacher: Mrs. D Baxter

Wycliffe Wonders

Why do you think it is important to be kind?

TALK THREAD

If you could choose a new rule for school, what would it be and why?

THIS HALF TERM'S CHRISTIAN VALUE IS:



We invite you to produce something based on our Christian Value, that we can display in school e.g. art work, models, poetry etc.

Spiritual moment

Here at Wycliffe, we know that spiritual moments are personal and precious so they are not always appropriate to share. On the occasion that you would like to share them with us, we would love to hear about them! Please send to the office for the attention of Mrs. Brodrick.

Sports Stars

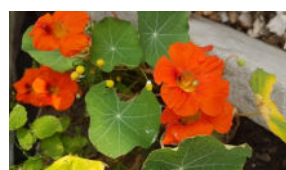
Joey C Hemendra K

Finlay H

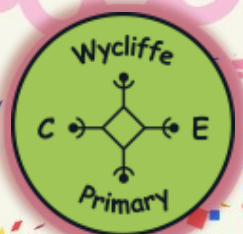
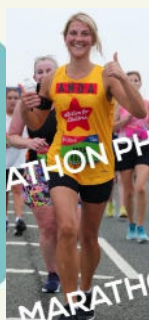
Beatrix F



Last week, Ash class watered the school garden. They gave the garden a tidy, observed frogs, and picked a variety of fruits and veg. The sunflowers are still looking beautiful and feeding a range of insects.



What a proud achievement. Miss Ando completed the Great North Run in 2hrs 15mins!



A huge well done to our new Reception children who have settled in very well!

WYCLIFFE WOW MOMENTS



Our Recorder Club pupils have been successful in receiving their copper music medal!



We would love to share yours and your child's WOW moments. Please send them into us.



ONLINE GAMING SAFETY TIP: Games are a great way to relax and have fun, but it's important to be careful about what you share online to keep yourself safe.

Wycliffe CE Primary School, Saltaire Road, Shipley, BD18 3HZ
Tel: 01274 584779 Email: office@wycliffe.bdat-academies.org